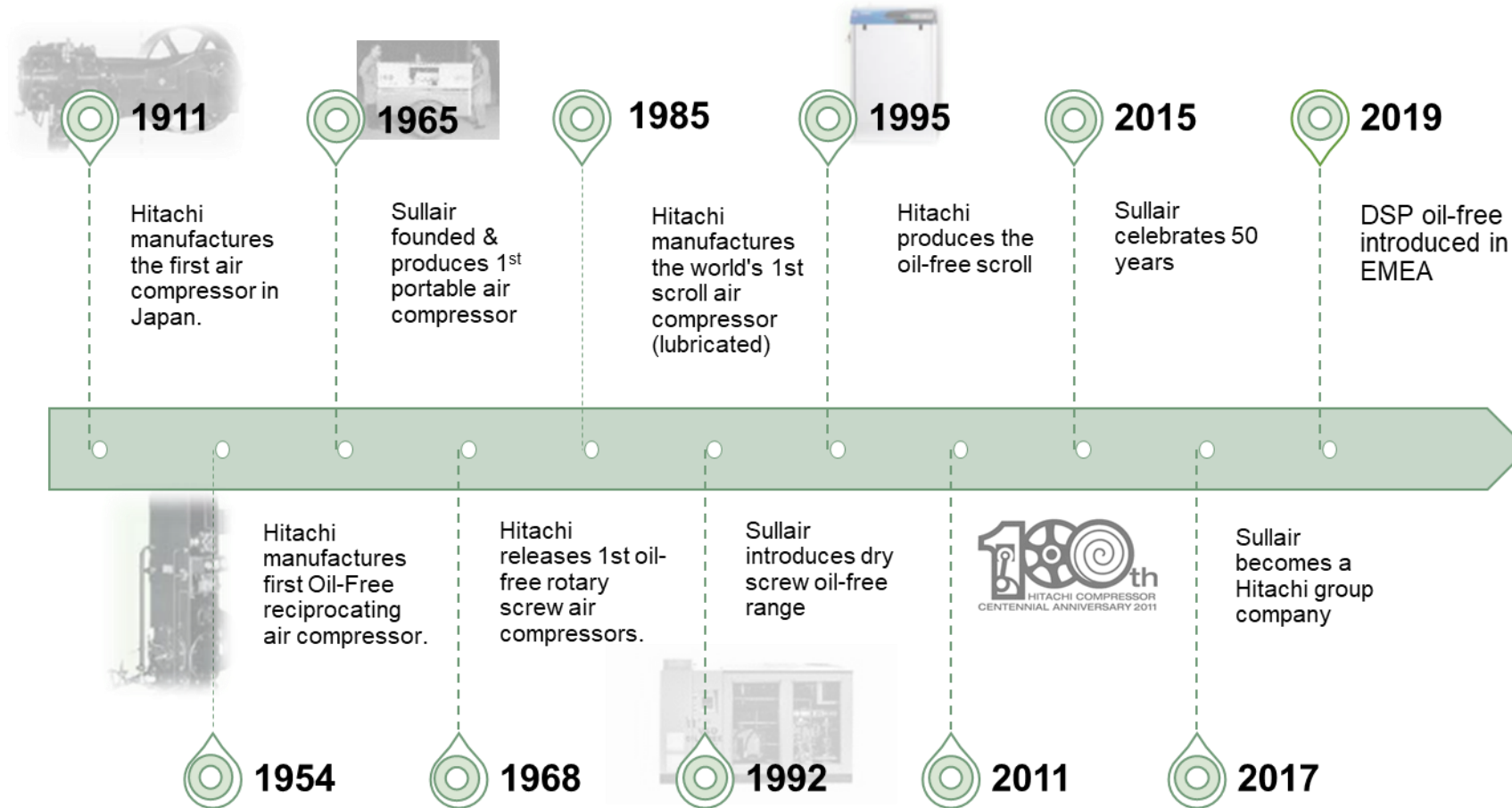


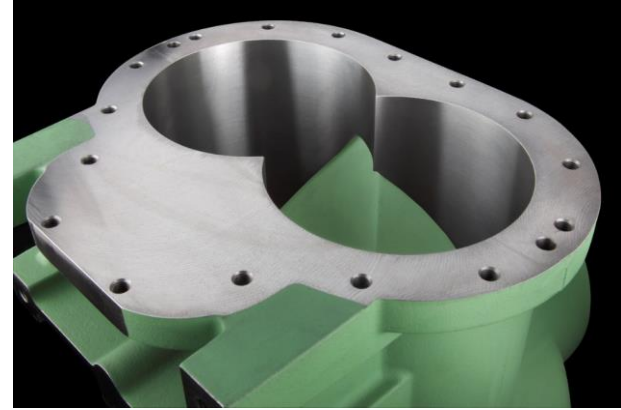
AS Range



Sullair and Hitachi compressor history



WHY SULLAIR ?



Designed and
Manufactured by
Sullair

Reliable

Durable

Efficient



MADE IN USA – Michigan City, IN

Customer Oriented

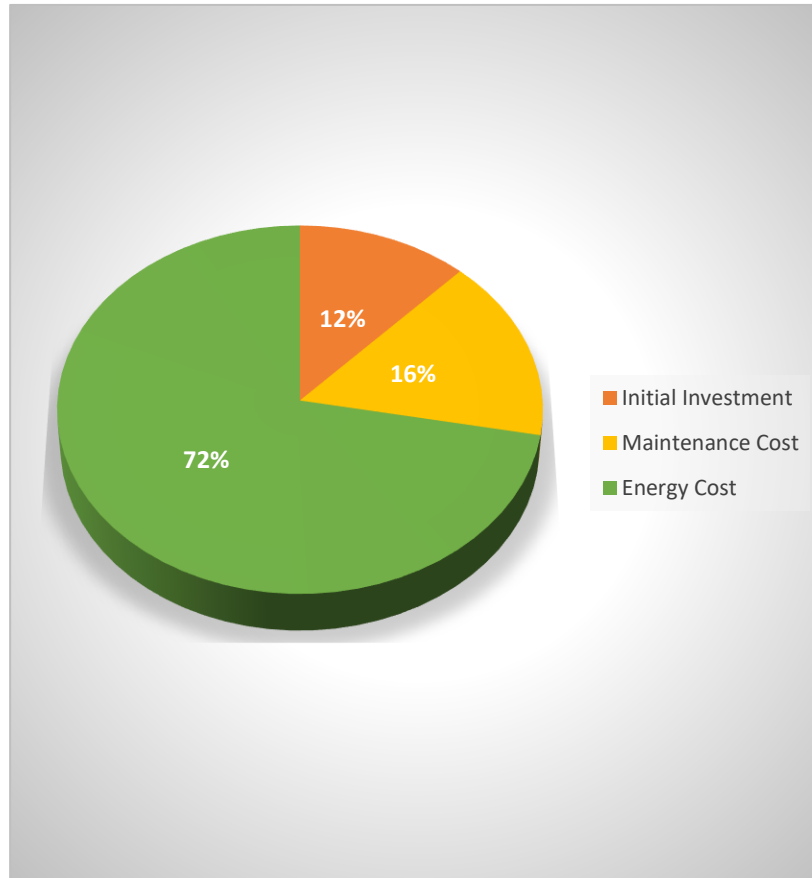
- Before we designed these compressors, we reviewed every aspect of product development with the customer in mind.

- The result is a compressor package that is:

- Energy Efficient
- Reliable package design
- Quiet
- Easy to maintain
- Small footprint
- Environmentally considerate



Life Cycle Cost of a Compressor



- Initial Investment
 - Cost of Compressor
 - Installation Cost
- Maintenance Cost
 - Service cost
 - Overhauling?
 - Breakdowns?
- Energy Cost
 - Electricity

Target Markets

Pretty much any industry Small & Large

- Automotive
- Chemicals
- Electronics
- Food & Beverage
- Glass
- Medical
- Oil & Gas
- Pharmaceutical
- Mining



The Heart and Soul of the Compressor

- Legendary Sullair air end
 - Designed, manufactured and tested in Michigan City, Indiana since 1965
 - 250,000+ compressors installed most still operating on original air end
 - Rotors precision balanced as a matched pair
- Engineered and constructed with premium components from the inlet to the discharge
 - Package air flow designed for optimal cooling



Legendary Sullair AirEnd

- 100% duty cycle
- Highly efficient asymmetric profile
- Manufacture in USA
- Tapered roller bearings
- Reliable, Durable, Robust
 - Runs cooler
 - No valve and ring repair
 - Less oil carryover
 - No varnish or carbon build-up
 - No vibration



Continuous Duty

Nomenclature —AS

AS2208AC SRF 380-415/5 YD TE EN

- AS = Asia Series, Lubricated Screw, Single Stage
- 22 = Rated Power, 4 –110kW
- 08= Rated Pressure (barg)
- AC = Air cooled, WC = Water Cooled
- SRF = Fluid, SRF I/4000
- 380/5 = 380-415V/50Hz
- YD = Starter, Wey Delta, V = VSD or FV = Full Voltage
- TE = Drive Motor, TEFCIP55
- EN = English Version

Standard Compressors

Model	Motor		Max. Working Pressure							Weight	Unit Size L*W*H mm	Discharge Connection
	HP	kW	7.6 bar	8.0 bar	8.6 bar	10.0 bar	10.6 bar	12.6 bar	13.0 bar			
AS04	5	4	-	0.58	-	0.46	-	-	0.4	228	1,210x546x1,460	Rp3/4
AS05	7.5	5.5	-	0.83	-	0.75	-	-	0.6	238		Rp3/4
AS07	10	7.5	-	1.07	-	0.94	-	-	0.8	248		Rp3/4
AS11	15	11	-	1.8	-	1.55	-	-	1.21	350	1,460x618x1,642	Rp1
AS15	20	15	-	2.28	-	2.05	-	-	1.7	365		Rp1
AS18	25	18.5	3.2	-	2.9	-	2.5	2.2	-	580	1,340x740x1,300	Rc1
AS22	30	22	3.75	-	3.55	-	3.1	2.7	-	650		Rc1
AS30	40	30	5.1	-	4.75	-	4.1	3.25	-	900	1,600x860x1,440	Rc1-1/2
AS37	50	37	6.8	-	6.3	-	5.8	5	-	1,000		Rc1-1/2
AS45	60	45	8.5	-	7.8	-	6.9	5.65	-	1,380	2,000x1,200x1,680	Rc2
AS55	75	55	10.5	-	9.5	-	8.6	7.6	-	1,410		Rc2
AS75	100	75	13.5	-	12.5	-	11.1	10.2	-	1,520		Rc2
AS90	125	90	16.9	-	15.5	-	14.2	12.8	-	2,100	2,500x1,400x1,800	Rc2
AS110	150	110	20.1	-	19.6	-	16.5	14.6	-	2,130		Rc2

Sullair's VSD Compressors

Model	Motor		Max. Working Pressure				Weight	Unit Size L*W*H mm	Discharge Connection
	HP	kW	7.6	8.6	10.6	12.6			
			bar	bar	bar	bar			
			Capacity m3/min						
AS30 VSD	40	30	-	1.6-4.75	1.4-4.25	1.2-3.7	980	1,950x860x1,440	Rc1-1/2
AS37 VSD	50	37	2.3-6.8	2.1-6.3	1.9-5.8	1.7-5.1	1,080		Rc1-1/2
AS45 VSD	60	45	1.95-8.5	1.92-7.93	1.9-6.9	1.78-5.65	1,480	2,250x1,200x1,690	Rc2
AS55 VSD	75	55	2.52-10.6	2.54-9.85	2.13-8.6	2.09-7.73	1,510		Rc2
AS75 VSD	100	75	3.23-13.5	3.29-12.55	2.79-11.1	-	1,620		Rc2
AS90 VSD	125	90	4.2-16.9	4.0-15.5	3.4-14.2	3.6-12.8	2,300	3,100x1,400x2,300	Rc2
AS110 VSD	150	110	5.5-20.1	5.4-19.6	4.0-16.5	4.0-14.6	2,400		Rc2

FEATURES AND BENEFITS:

Air End

- Low-speed and large rotor for quiet, durable, and efficient operation.

High-Efficiency Motor

- IP55 IE3 motor
- Durable bearings for extended performance.

Environmental Protection Pan

- Fully-sealed
- Captures spills

Fluid and Air Cooler(s)

- Easy access for maintenance
- Air cooled

Heavy Duty Air Filter

- Protects key components from premature failure
- Extends separator, fluid filter and fluid life
- Easy access for maintenance

Separator

- No tubing to disconnect
- "O" Ring seal prevents leaking
- Reduces service time
- Fluid sight glass

AS 4kW – 15kW Features

- Small Footprint
- Premium efficient IE3 TEFC (IP55) motors Motor service factor 1.25
- IP54 Electrical – similar to NEMA4
- Reliable Sullair Air End
 - Patented rotor design
 - Bearing fluid reservoirs
 - Ensures fluid is available at start-up
 - Extends air life
 - Long life bearings
- Sound enclosure for quiet operation
 - Reduces sound levels to as low as 66 dBA
 - Easily removable for service
- In tank oil separator.
- New SCCT Controller.
 - Belt Driven
 - Onsite conversion from 8 to 10 bar
 - DOL starter 4 – 7 kW
 - 4 and 7kW no aftercooler
 - 11 and 15 kW aftercooled.
 - Genuine SRF lubricant factory filled. (Option for Sullube at additional cost.)
 - GB coded tank
 - Inlet Filter - 99.95+ overall efficiency (per ISO 5011)

Options.

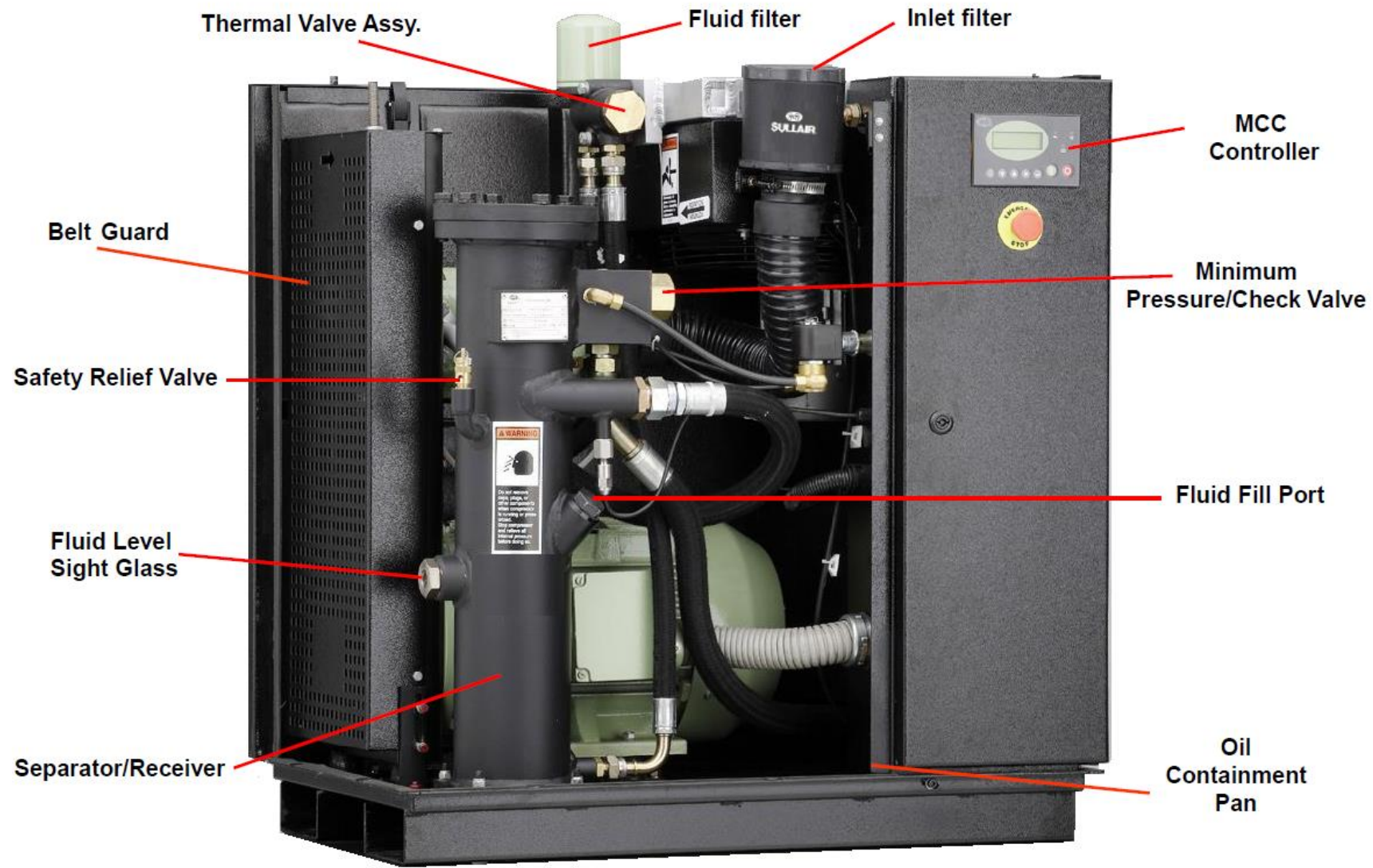
- Wye Delta Starter on 4-7kW
- Distributor Assembly Tank Mounted
- Distributor Assembly Tank Mounted with Dryer

SCCT Controller



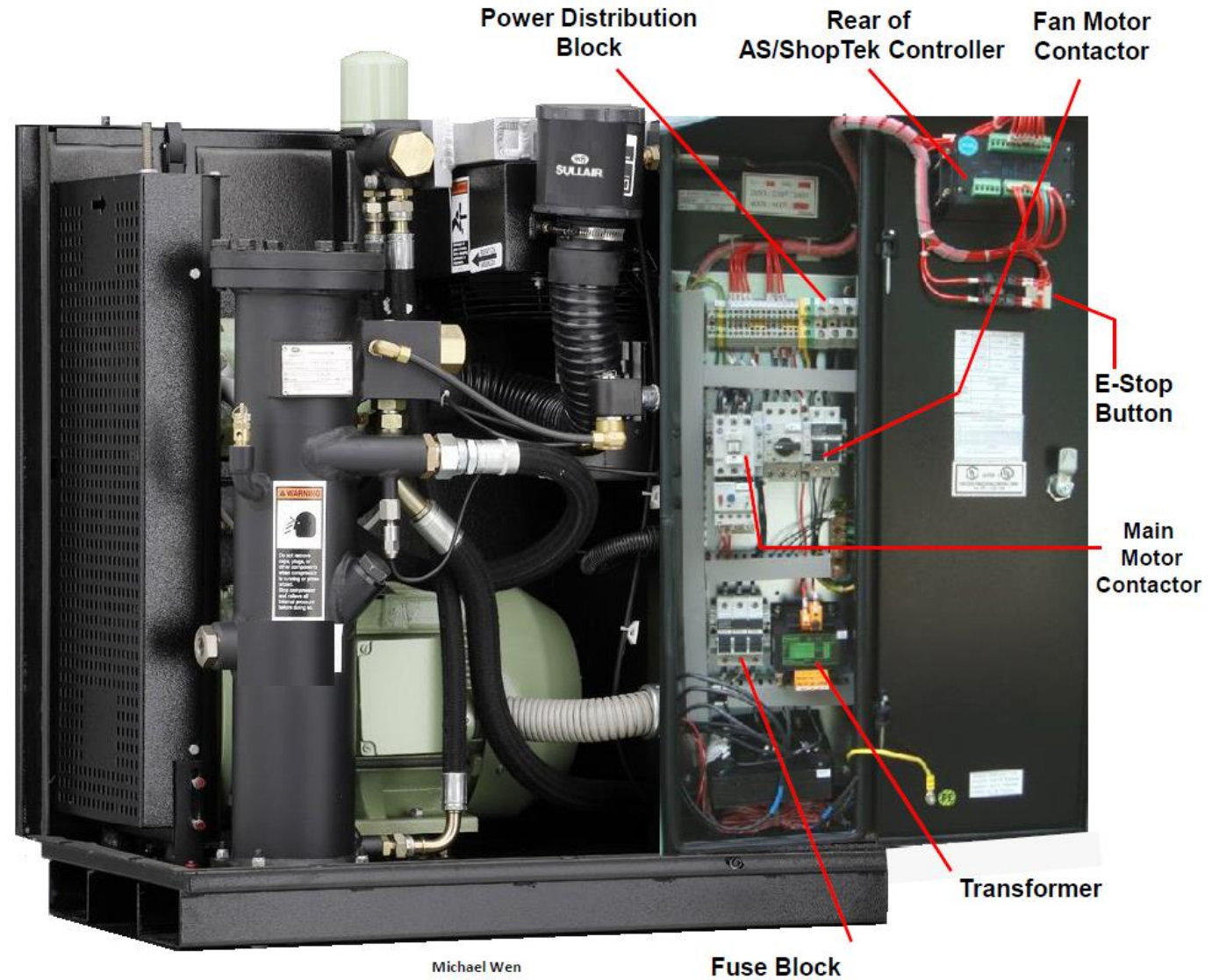
- 2.4" Color graphic display (6.096cm)
- IP65 / NEMA4 fascia protection Limited Ingress permitted)
- Built-in' phase protection
- Prime and Fan motor current protection
- MODBUS ready
- Remote control via hard wire to the I/O or communications
- Industry 4.0 / IOT ready
- Sequence up to 8 compressors

AS 4-15kW



Michael Wen

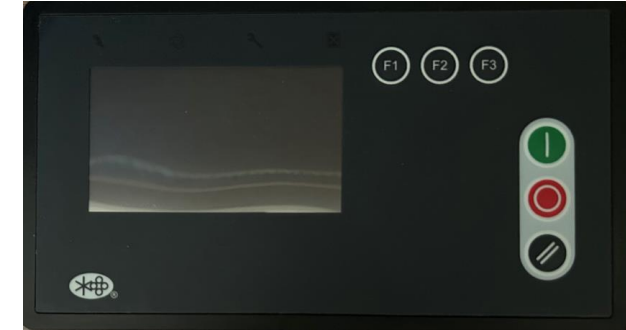
AS 4-15kW



AS 18kW – 110kW Features

- Small Footprint
- Premium efficient IE3 TEFC (IP55) motors.
- Y-Delta starter (fixed speed)
- Motor Service factor 1.15
- IP54 Electrical – similar to NEMA4 ST04 – ST22. IP55 ST30 – ST110. VSD - IP 54 ST18 –ST30, IP55 ST45 – ST110
- Reliable Sullair Air End
 - Patented rotor design
 - Bearing fluid reservoirs
 - Ensures fluid is available at start-up
 - Extends air life
 - Long life bearings
 - Spiral Valve Technology. (Available in 90kw & 110kW Only)
 - Matches output to demand
 - Stabilizes system pressure
 - Minimizes need for air receiver
 - Extends package life
- Fluid Filter and Air Filter differential indicators for easy identification of contamination
- Sound enclosure easily removable for service
- SCCM Controller FS & VSD.
- Deluxe Micro processor Controller (VSD) New SCCM Controller FS & VSD.
- Genuine SRF lubricant factory filled. (Option for Sullube at additional cost.)
- GB code tank
- Inlet Filter - 99.95+ overall efficiency (per ISO 5011)

SCCM Controller



- 4.3" Color graphic touch display (10.922cm)
- IP65 / NEMA4 fascia protection
- Build-in' phase protection
- Prime and Fan motor current protection
- MODBUS ready
- Remote control via physical I/O or communications
- Industry 4.0 / IOT ready
- Sequencing up to 16 compressors

Main Differences between 4/15kW and 22/110kW

4 -15kW

- Belt Driven
- New SCCT Controller
- DOL starter 4 – 7 kW
- 11 and 15 kW aftercooled

22 – 110kW

- Fluid Filter and Air Filter differential indicators for easy identification of contamination
- New SCCM Controller FS & VSD
- Direct-coupled Gear Drive

Warranty

- 1 Year package
- 2 Years Airend
- Conditional Emerald Warranty. **No additional Cost.**
 - 5 Years Airend
 - 5 Years major Components:
 - Air/Fluid Separator
 - Main drive motor
 - Fluid cooler
 - Aftercooler
 - VSD

5 years coverage on the air end for units up to and including 150 psig (10 bar) discharge. Conditional on the use of Sullair fluids and parts and maintaining the machine in accordance with Sullair recommended intervals and requirements. To participate in the Extended Warranty Air End, all air ends built after August 1, 2016, must participate in the 'Sullair Oil Sampling Program.' See WQA119. (Every 2,000 hours or twice per year, whichever comes first). A missed sample interval, or two consecutive "bad" samples void the extended warranty. Years 1-3 covers parts, labor, and mileage and travel time. Years 4-5 covers the air end and freight only (Distributor is responsible for labor, mileage and travel time). All warranties are considered concurrent unless otherwise stated. As of July 15, 2020 (ship date), this warranty applies to all machines with the above conditions that are filled with PristineFG™, SRF II/8000®, SRF 1/4000®, Sullube®.

Competitive Advantages

- Conditional Emerald Warranty. **No additional Cost.**
- Option to add 10,000-hour Genuine Sullube® factory fill. **@ Additional cost.**
- Best AirEnd in the market equals reliability minimizing lost production
- <2ppm oil carry over-competitors oil carry over are doubled in 3-5ppm range
- Extremely reliable Hebei Electric motors – Sullair has a long experience with this vendor
- Inlet Filter - 99.95+ overall efficiency (per ISO 5011)
- Environmental Solid Steel Full Floor (Bunded base) Prevents oil spillage on floor.

Key Questions to ask your customer when sizing a compressor.

1. **Do they need Industrial Electric or Diesel Portable?**
2. **What is the application?**
3. **What Pressure do they require?**
4. **What Flow do they require?**
5. **Where will the compressor be installed. This is important to consider environmental conditions will effect the compressors performance and maintenance. Dust , Heat, etc.**

Flow is measured in.

- 1. l/min (litres/minute)
- 2. l/sec (litres/second)
- 3. m³/min (cubic metres / minute)
- 4. CFM (cubic feet /minute)

Pressure is measured in.

- 1.Psi (Pounds per square inch)
- 2.bar (Barometric pressure)
- 3.kPa (kilopascal)

There are many more units of measurement for compressors. If you get another unit, let me know and I will convert for you.

Maintenance Schedule

RECOMMENDED SPARE PARTS	Part N°	Replacement P/N	Qty per svc	Unit List Price	50 h	2000 h	4000 h 6 mnths	6000 h	8000 h or Yearly	10000 h	12000 h	14000 h	16000 h	18000 h	20000 h	22000 h	24000 h	Or If Indicated			
Model AS 18-22					Replace either hourly or on time duration, whichever is soonest or if indicated																
FLUID, SRF 1/4000 5 GAL PAIL	250019-662		1				X		X		X		X		X		X				
ELEMENT, FLUID FILTER	250025-525		1		X	X	X	X	X	X	X	X	X	X	X	X	X	X	X		
ELEM,AIR FILTER AS22	88291002-854		1			X	X	X	X	X	X	X	X	X	X	X	X	X	X		
KIT, ELEMENT, PLTD PRIM FORMED	02250137-895		1				X		X		X		X		X		X		X		
RECOMMENDED PARTS FOR STOCK	Part N°		Qty		Notes													As required			
KIT,INLET VLV REPAIR DXX102E	02250138-090		1																	X	
KIT,INLET VLV REBUILD DXX102E	02250145-097		1																	X	
KIT,MPV REPAIR KIT	88291013-600		1																	X	
VLV,THRM 182 DEG. F. ES11	88290022-023		1																	X	
KIT, REPAIR PRESS REG VALVE	250019-453		1																	X	
VLV,273098 IN 88291010-153	88292006-779		1																	X	
VLV,BLOWDOWN 1/4"NPT GRX	88291008-365		1																	X	
KIT,SEAL REPL D10E TFE LIP CW	02250155-594		1																	X	
KIT,TOOL-SL WSLV D102/E08E/08F	001932-005		1																	X	
ELEM,CPLG WS18/22/30 KTR	88290019-865		1																	X	
CLR,FLUID&AFTER AS22 AC	88291002-944		1																	X	
SEP,TRAP WS100 2-RC1"	88292000-098		1																	X	
CONT,EC2000 AC110V HONGSAI	88290021-398		1																	X	
SNSR,TEMP PT100 ONLY FOR AS	88290021-986		1																	X	
SNSR,PRESSURE 250PSI 4-20MA	88290014-514		1																	X	
Check Operation & Maintenance Manual for the correct service procedure.																					
O&M Manual-AS18-22	88291003-538																				
Fluid capacity Liter (U.S. Gal.) Fixed	11.5 (3)																				
Fluid capacity Liter (U.S. Gal.) VSD	11 (2.9)																				
Please quote compressor model, serial number and B.O.M number when ordering spare parts.																					